



NATIONAL ENTRANCE EXAMINATION – August 2014

Resource Pack

Figure 1: Maui's and Hector's dolphin sightings from 1970 – July 2013.

Figure 2: Protection measures for Maui's dolphins on the West Coast of the North Island.

Figure 3: Map of the 'Block Offer 2014' for the Offshore Release Area: Taranaki Basin 14TAR-R1.

Table 1: Maui's dolphin sightings from Pariokariwa Point to New Plymouth and New Plymouth South to Cape Terawhiti.

Table 2: Individual movements of Maui's dolphins and a Hector's dolphin migrant (^) that were sampled more than once during 2010–11, as identified by genotype recapture.



Figure 1: Maui's and Hector's dolphin sightings from 1970 – July 2013.

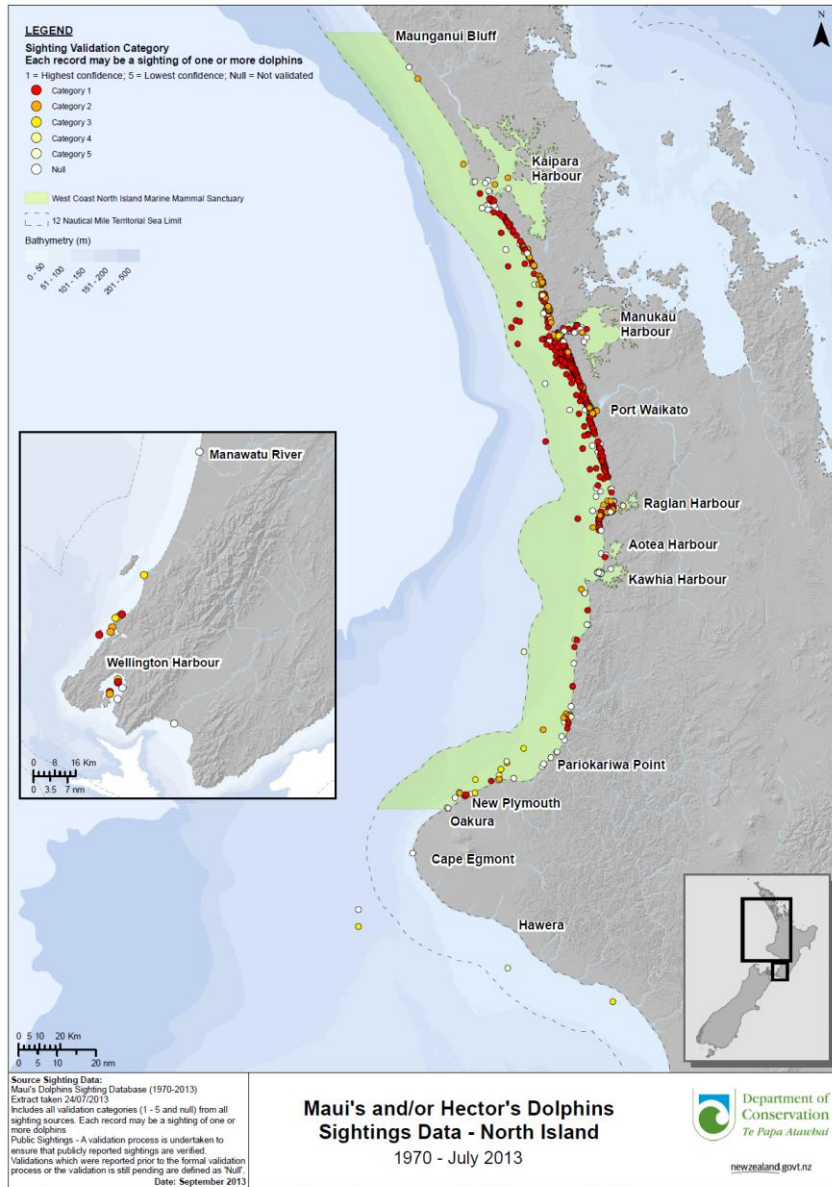
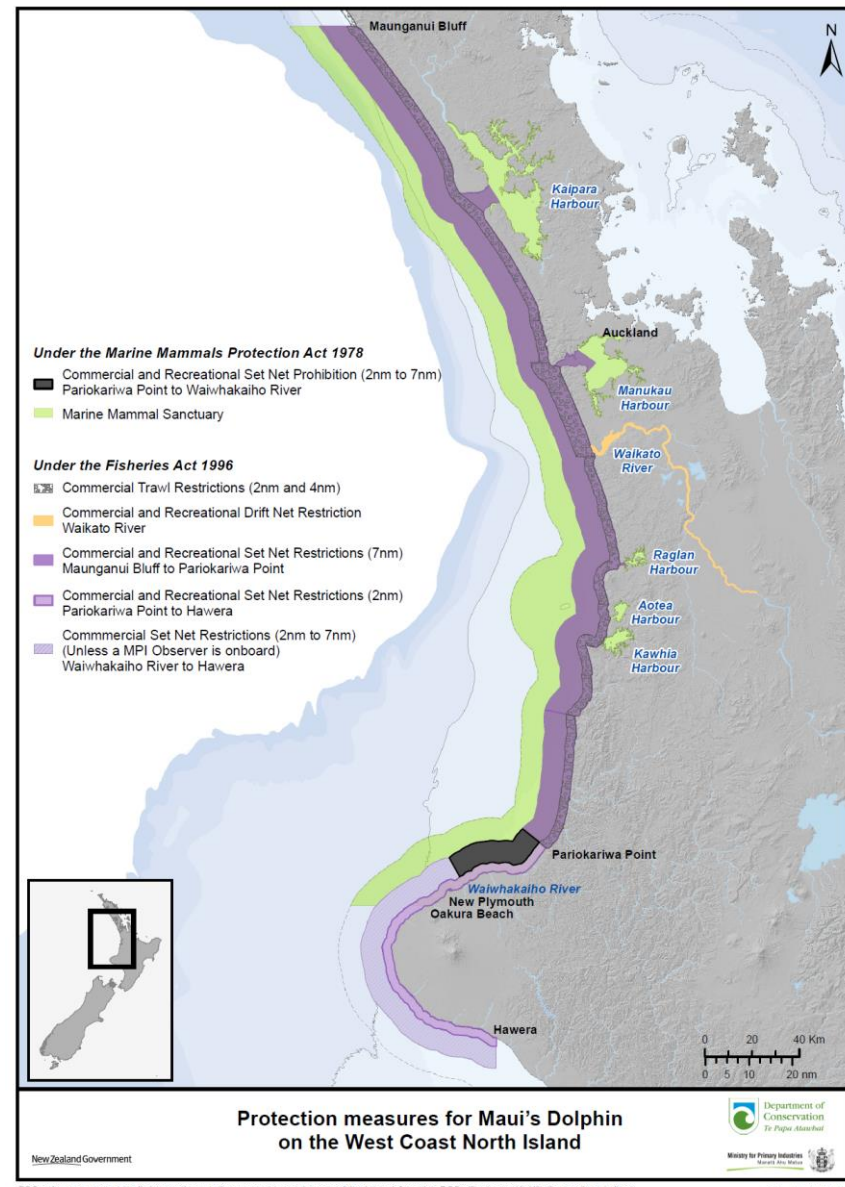


Figure 2: Protection measures for Maui's dolphins on the West Coast of the North Island.



DOC makes no express or implied warranties as to the accuracy or completeness of the data or information, nor its suitability for any purpose. DOC will not accept liability for any direct, indirect, special or consequential damages, losses or expenses howsoever arising and relating to use, or lack of use, of the data or information supplied. Copyright and Topographic information derived from Land Information New Zealand. Crown Copyright Reserved.

DOC makes no express or implied warranties as to the accuracy or completeness of the data or information. DOC will not accept liability for any direct, indirect, special or consequential damages, losses or expenses howsoever arising and relating to use, or lack of use, of the data or information supplied. Crown Copyright Reserved.

Figure 3: Map of 'Block Offer 2014' for the Offshore Release Area: Taranaki Basin 14TAR-R1. Total area 54,920.92 km². This is one of the areas of petroleum exploration permits released for annual tender by the New Zealand Government in 2014. This area is off the west coast of the North Island, stretching from the coast of Auckland to the northern tip of the South Island. Two permits were awarded in the offshore Taranaki Basin in 'Block Offer 2013'.

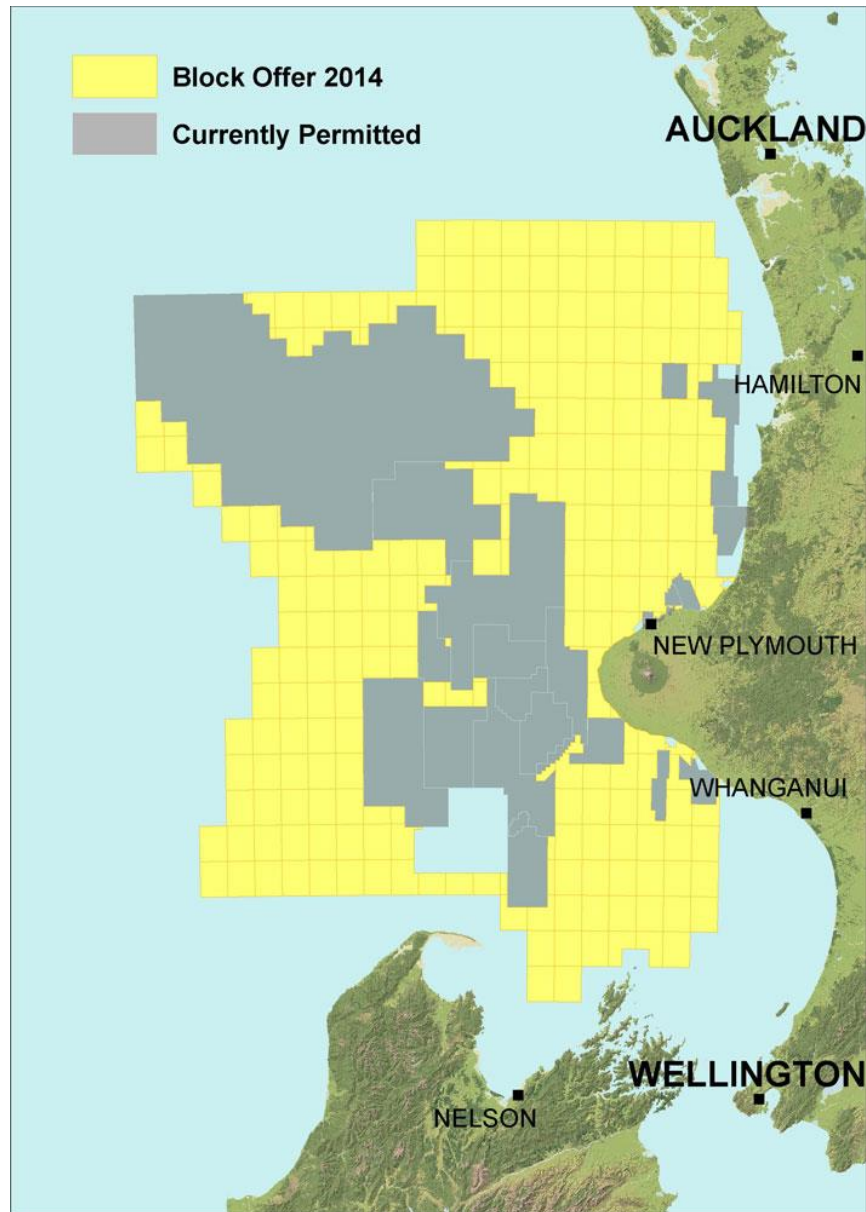


Table 1: Maui's dolphin sightings from Pariokariwa Point to New Plymouth and New Plymouth South to Cape Terawhiti. This area is included in 'Block Offer 2014' Taranaki Basin 14TAR-R1 area.

Platform	Date event observed	Latitude (DwC)	Longitude (DwC)	Location (DwC)	Description	Number adults	Number juveniles
Platform not specified	17/04/1970	-39.05156	174.06917	New Plymouth		3	0
Platform not specified	30/04/1974	-38.92729	174.46316	Waititi Beech		2	0
Platform not specified	01/09/1976	-38.98918	174.22061	Off Waitara, Taranaki		1	0
Platform not specified	01/02/2001	-39.11013	173.94153	Oakura beach		1	0
Commercial fishing vessel	16/01/2004	-39.0465	174.01125	Off Saddleback Island Port Taranaki	Four sighted by commercial fisherman.	4	0
Commercial fishing vessel	16/01/2004	-39.04472	174.00634	Sugarloaf Islands NP	Commercial fisherman.	4	0
Land	18/01/2004	-38.9795	174.30855	Off Turangi Road.	One sighted swimming around cray pots near shore 10m of water.	1	0
Private vessel	20/01/2004	-38.9799	174.30837	Off Turangi Road.		3	0
Commercial fishing vessel	21/01/2004	-38.9889	174.22825	Off Waitara, Taranaki		3	0
Other vessel	22/01/2004	-39.11405	173.9466	Oakura beach	Sightings by two different groups of surfers.	2	0
Other vessel	22/01/2004	-39.1137	173.947	Oakura beach	Two sighted. Sightings by two different groups of surfers.	1	0
Private vessel	19/05/2005	-38.91598	174.47128	Waititi Beach	Flat sea, dolphins swimming around boat.	10	0
Offshore oil platform	31/08/2006	-38.91245	174.27074	Pohokura Drilling Rig, Urenui.	Four sighted with bottlenose dolphin. Observer was radio operator and one of his job was unofficial marine mammal observer.	4	0
Platform not specified	01/01/2007	-39.05692	174.03757	New Plymouth harbour	Mother and calf sighted	1	1
Private vessel	01/02/2007	-39.054983	174.04206	Port Taranaki, New Plymouth		1	0
Platform not specified	01/02/2007	-39.05498	174.03564	Port Taranaki, New Plymouth		1	0
Private vessel	16/02/2007	-39.06	174.04	Port Taranaki, New Plymouth	Seen by Skipper and crew in Port Taranaki. Photographed on phone.	1	0
Offshore oil platform	28/04/2008	-38.907467	174.26903	Pohokura Platform Bravo		7	0
Private vessel	18/02/2009	-38.96925	174.22568	Airedale reef, Waitara	1km offshore	2	0
Private vessel	02/12/2009	-39.0443	174.0946	Fitzroy Beach, Taranaki		2	0
Private vessel	10/12/2009	-39.0549	174.0483	Port Taranaki, New Plymouth	Dolphin followed a boat into the harbour at New Plymouth.	1	0
Private vessel	10/12/2009	-38.9934	174.1833	Off Waitara, Taranaki	Positive ID. We have a bit of a checklist for things we go through to confirm sightings.	1	0
Private vessel	30/01/2010	-39.0666	173.9834	Just outside marine reserve	Travelling, came up to our boat and rode the bow wave for a short distance.	5	0
Private vessel	06/02/2010	-38.9835	174.2264	North of Waitara River mouth	Definitely saw one, maybe a 2nd but couldn't be sure.	1	1
Private vessel	14/03/2011	-38.85	174.36	Off Mimi Urenui Bay	Definitely had the rounded dorsal, cruising on the surface solo.	1	0
Private vessel	02/10/2011	-38.43135	174.35396	Mohakatino	Jumped twice 10m from boat. Not a common dolphin but not enough conclusive evidence to say that it was a Maui's dolphin	1	0
Private vessel	18/02/2012	-39.938	174.88395	Between Kai Iwi beach and Whanganui Bar	Dolphin jumped out of water 10m from boat so clear look. 3 other dolphins within 20-30m of boat, one was clearly smaller than the others	3	1
Private vessel	24/03/2012	-39.801283	174.29118	Off Patea, South Taranaki	Boat anchored, fishing. Dolphins swam around boat.	4	0
Private vessel	01/04/2012	-38.941	174.2347	Off Waitara, Taranaki	Dolphins were porpoising, heading to shore seen 20m from boat. Been going out of Waitara for 70y, never seen this type before.	8	0
Offshore oil platform	19/04/2012	-39.626667	173.45087	Maui A Offshore Oil Platform	Crane boom was out over water. Every now and then the swell/wave would pass over hook and Maui's dolphin was sighted in wave.	1	0
Private vessel	24/07/2012	-38.767693	174.46699	Mokau		1	0
Private vessel	11/01/2013	-38.987983	174.09532	Off Bell Block	Saw the dolphins briefly alongside then they disappeared.	4	0
Offshore oil platform	23/11/2013	-40.0333	173.2439	Mania 2 well site, drilling vessel called Kan Tan IV	Roundish stubby dorsal fin. Had a really good look from above, never seen one like it before. Travelling west.	1	0
Non-motorised coastal activity	17/12/2013	-39.046786	174.04185	Port Taranaki, New Plymouth	Rounded and unmistakable dorsal fin. Heading out to sea, travelling. Rolled over twice.	1	0
Private vessel	18/01/2014	-39.048019	174.04168	Port Taranaki, New Plymouth	Swam in front of the boat. I stopped the boat then it turned back, so I got a really good look at it.	1	0
Non-motorised coastal activity	18/01/2014	-39.046219	174.03232	Northwest of Moturoa Island	Black and rounded fin. Came from behind observer. Heading north. It swam past the side he was fishing.	1	0

Modified from the Maui's dolphin sightings database:
<http://www.doc.govt.nz/conservation/native-animals/marine-mammals/dolphins/mauis-dolphin/docs-work/mauis-dolphin-sightings/>

Table 2: Individual movements of Maui's dolphins and a Hector's dolphin migrant (^) that were sampled more than once during 2010–11, as identified by genotype recapture. Samples from the same individual are grouped in blocks with the ID code in bold (an individual's first sample code is used as its ID code). Distances observed between recapture locations ('Distance (km)') within and across years were measured as straight-line distances using the distance calculator (<http://jan.ucc.nau.edu/~cvm/latlongdist.html>).

* = Sample pair used for calculating the maximum straight-line distance between recaptures.

SAMPLE CODE	DATE	LOCATION	LATITUDE (°S)	LONGITUDE (°E)	SEX	WITHIN 2010		WITHIN 2011		MAXIMUM ACROSS 2010–11	
						DISTANCE (km)	TIME SPAN	DISTANCE (km)	TIME SPAN	DISTANCE (km)	TIME SPAN
NI56											
NI10-14	7-Feb-10	S. Manukau	37.228167	174.615667	F	17.88	9 days			18.59	367 days
NI10-31*	16-Feb-10	N. Raglan	37.376717	174.692650							
NI11-12*	18-Feb-11	N. Raglan	37.223450	174.609350							
NI10-04	5-Feb-10	S. Manukau	37.162028	174.575389	F	0.91	2 days			n/a	n/a
NI10-12	7-Feb-10	S. Manukau	37.165217	174.584783							
NI10-05	6-Feb-10	S. Manukau	37.194750	174.592861	F	0.65	1 hr	0.34	2 min	8.10	373 days
NI10-07	6-Feb-10	S. Manukau	37.197861	174.596500							
NI10-08*	6-Feb-10	S. Manukau	37.198833	174.598167							
NI11-03	14-Feb-11	S. Manukau	37.133183	174.568550							
NI11-04*	14-Feb-11	S. Manukau	37.130717	174.566233							
NI10-06*	6-Feb-10	S. Manukau	37.196056	174.592778	M					3.12	377 days
NI11-13	18-Feb-11	N. Raglan	37.220900	174.609050							
NI10-11	7-Feb-10	S. Manukau	37.163567	174.583667	F					4.20	372 days
NI11-05	14-Feb-11	S. Manukau	37.129067	174.564583							
NI10-13	7-Feb-10	S. Manukau	37.181250	174.592333	F					0.88	372 days
NI11-02	14-Feb-11	S. Manukau	37.176150	174.584817							
NI10-16	7-Feb-10	S. Manukau	37.207550	174.604450	M					5.29	373 days
NI11-07	15-Feb-11	S. Manukau	37.163867	174.581033							
NI10-17	8-Feb-10	N. Manukau	36.757267	174.376350	F	1.27	42 min			46.30	372 days
NI10-18	8-Feb-10	N. Manukau	36.757267	174.376350							
NI10-19*	8-Feb-10	N. Manukau	36.755367	174.362417							
NI11-06*	15-Feb-11	S. Manukau	37.138217	174.565733							
NI10-20	8-Feb-10	N. Manukau	36.737783	174.362467	M	11.07	1 day			11.07	1 day
NI10-22	9-Feb-10	N. Manukau	36.651500	174.300833							
NI10-21	9-Feb-10	N. Manukau	36.652667	174.301667	F	11.33	2.5 hr	78.62	19 days	80.43	375 days
NI10-23*	9-Feb-10	N. Manukau	36.568167	174.231000							
NI11-18*	19-Feb-11	S. Manukau	37.222083	174.615183							
NI11-36	10-Mar-11	N. Manukau	36.583767	174.237067							
NI10-24^	11-Feb-10	S. Manukau	37.360233	174.685983	F	14.03	13 days	7.44	3 days	37.67	356 days
NI10-37^*	24-Feb-10	Raglan	37.483067	174.721283							
NI11-08^*	15-Feb-11	S. Manukau	37.163950	174.579717							
NI11-11^	18-Feb-11	N. Raglan	37.225767	174.611600							
NI10-26	11-Feb-10	S. Manukau	37.362500	174.683667	F	26.44	5 days			26.44	5 days
NI10-29	16-Feb-10	N. Raglan	37.592000	174.759500							
NI10-27*	11-Feb-10	S. Manukau	37.362500	174.687500	M	18.81	5 days			18.81	5 days
NI10-34*	16-Feb-10	N. Raglan	37.526100	174.740917							
NI11-31	9-Mar-11	N. Raglan	37.440833	174.696833							
NI10-28*	16-Feb-10	N. Raglan	37.591833	174.759000	M			3.17	9 days	18.57	9 days
NI11-29*	28-Feb-11	N. Raglan	37.432533	174.696717							
NI11-35	9-Mar-11	N. Raglan	37.459467	174.708267							

Data from: Hamner, R.M.; Oremus, M.; Stanley, M.; Brown, P.; Constantine, R.; Baker, C.S. 2012: Estimating the abundance and effective population size of Maui's dolphins using microsatellite genotypes in 2010–11, with retrospective matching to 2001–07. Department of Conservation, Auckland. 44 p.